

## About Us

---

Company Name: CV. Sinar Bintang Timur

Workshop: Jl.Raya Setu Wates No. 91 KP. Rawa  
Banteng RT. 03 RW. 01 Mekar wangi  
Cikarang Barat Bekasi  
Tlp : 021-36572442  
Fax: 021-29479566  
Email: sinar.bintangtimur@gmail.com

NPWP : 02. 835. 545. 1-001.000

SIUP NO: 00231-05/PK/1.824.271

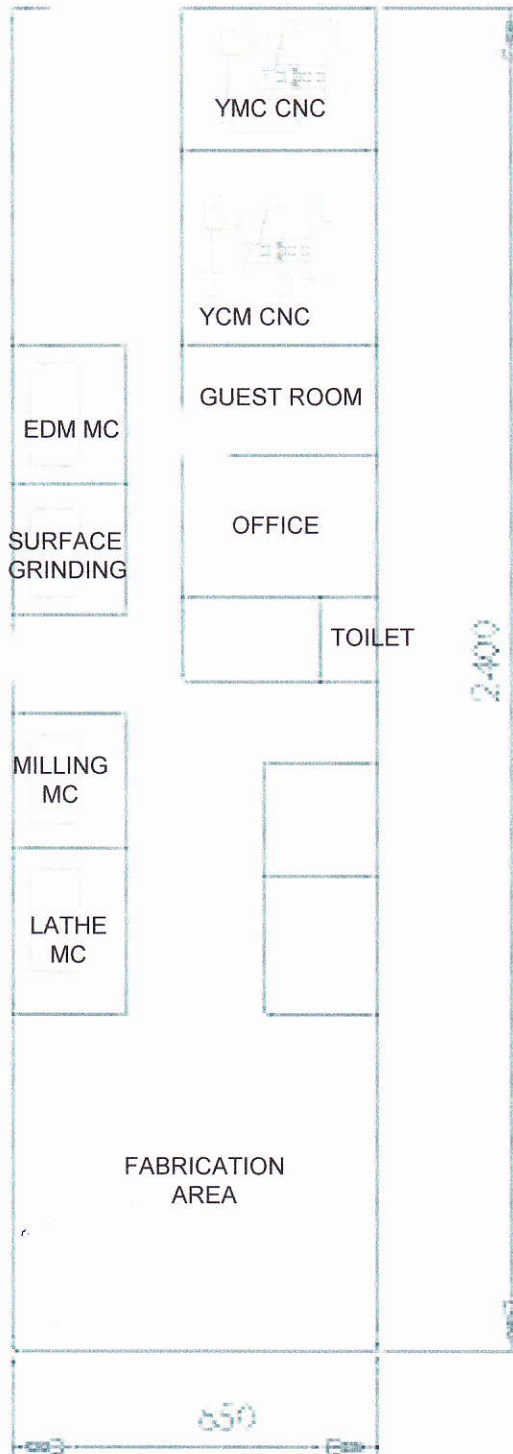
TDP NO : 09.04.3.46.18787

Jl. Galursari 8 No. 24 Rt. 009 / Rw. 001  
Kel. Galursari Selatan, Kec. Matraman  
Jakarta Timur - INDONESIA

---

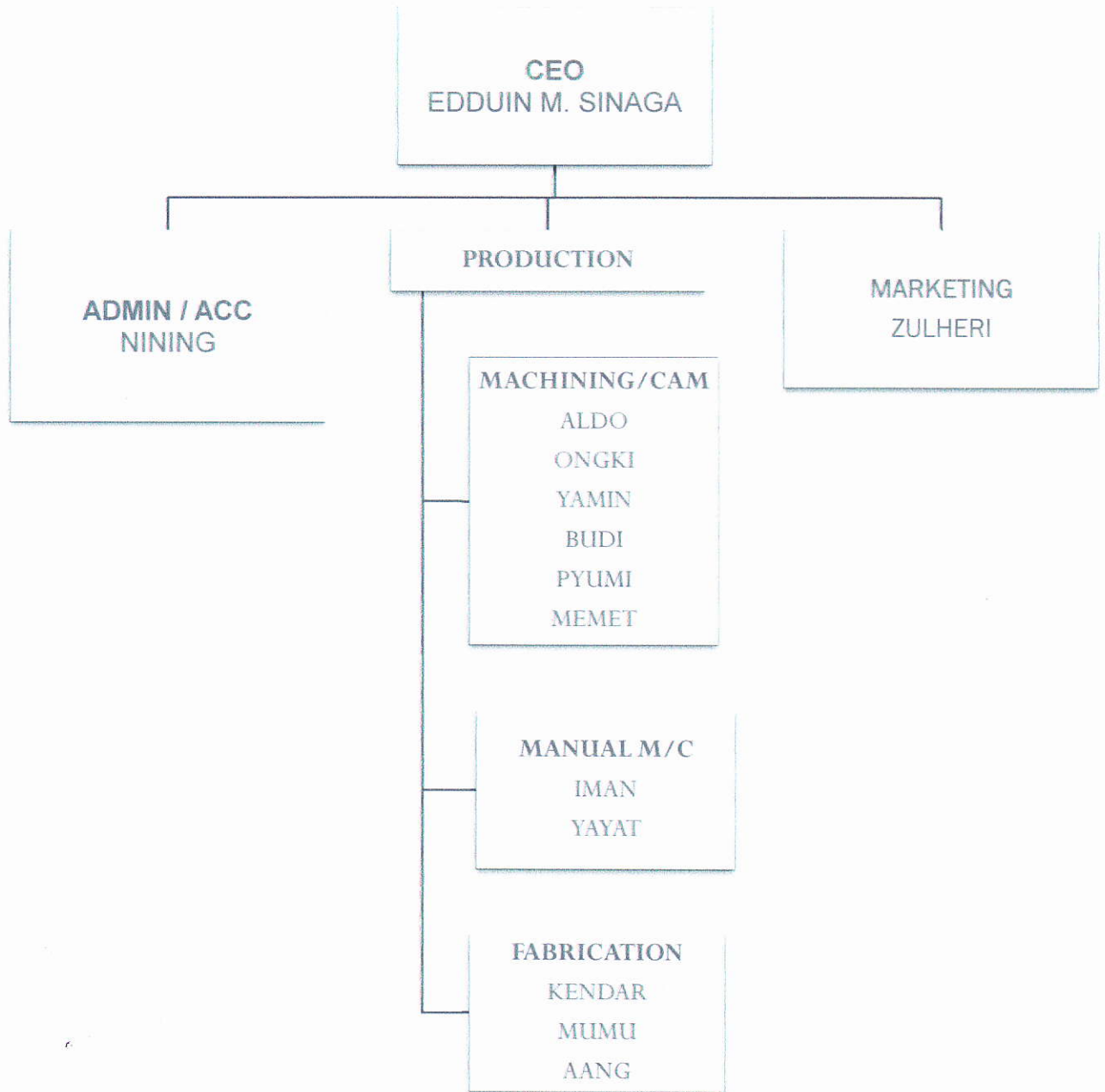
Company Profile CV. SINAR BINTANG TIMUR  
Website : <http://www.sinarbintangtimur.com>

# Factory Layout



• Company Profile CV. SINAR BINTANG TIMUR  
Website : <http://www.sinarbintangtimur.com>

# Organization Chart



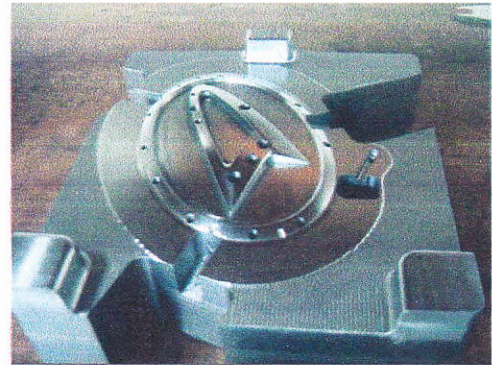
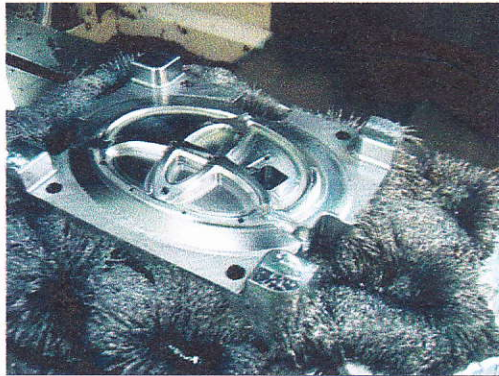


## Summary of Product



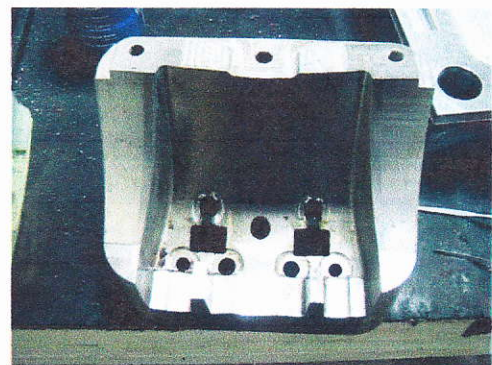
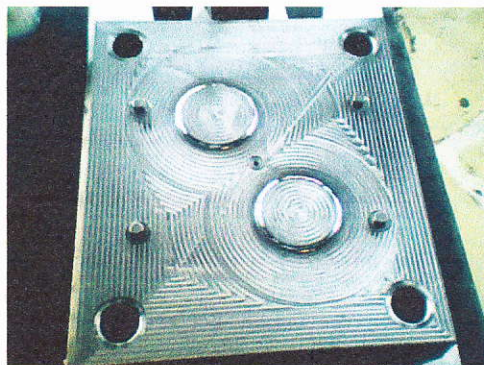
### DIES BONDING UPPER LOWER

PT SUGITY CREATIVES



### INSERT MOLD

PT SUGITY CREATIVES



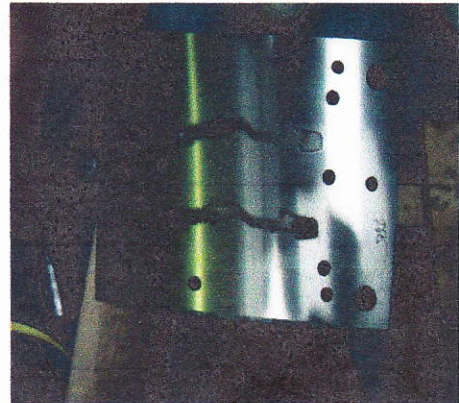
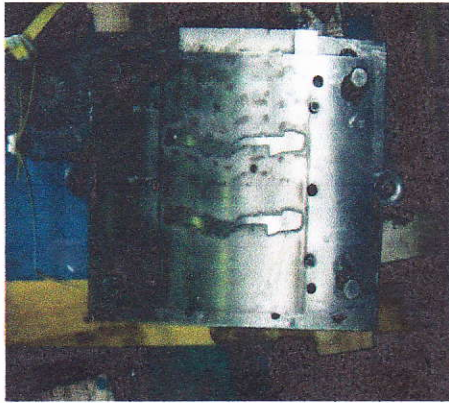
### INSERT MOLD

PT SUGITY CREATIVES

• Company Profile CV. SINAR BINTANG TIMUR  
Website : <http://www.sinarbintangtimur.com>

## Summary of Product

---



**DIES FOR AUTOMATIC**

**PT FUJI TECHNIKA**

---

• *Company Profile CV. SINAR BINTANG TIMUR*

*Website : <http://www.sinarbintangtimur.com>*



## Summary of Product



**PALLET PRODUCT**

**PT SUGITY CREATIVES**



**WASHING TABLE**

**PT IHARA**



**ROLLER CONVEYOR**

**PT SUGITY CREATIVES**



**CARRIER**

**PT MIPP**

• Company Profile CV. SINAR BINTANG TIMUR  
Website : <http://www.sinarbintangtimur.com>



## Summary of Product



**BOX PANEL**

**PT JST INDONESIA**



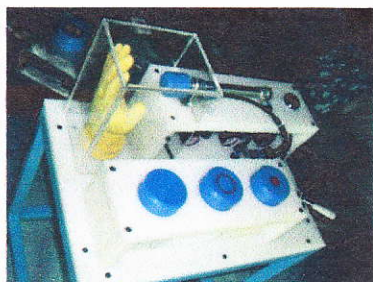
**TANKI MATERIAL**

**SUGITY CREATIVES**



**WORKING TABLE**

**PT JST INDONESIA**



**CYLINDER PRESSURE HIT TEST  
DEVICE**

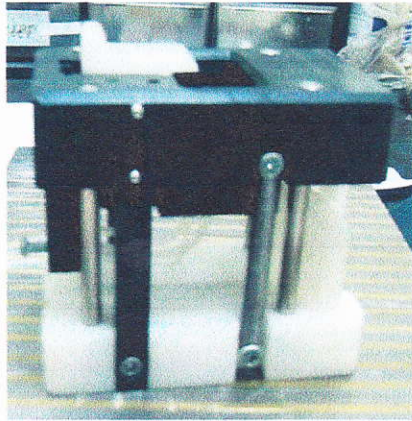
**PT YAMAHA MOTOR**



**REEL STAND**

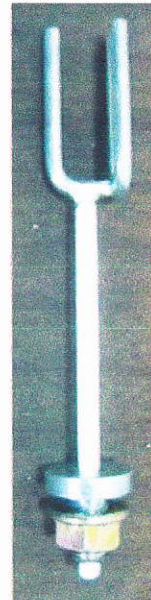
**PT JST INDONESIA**

## Summary of Product



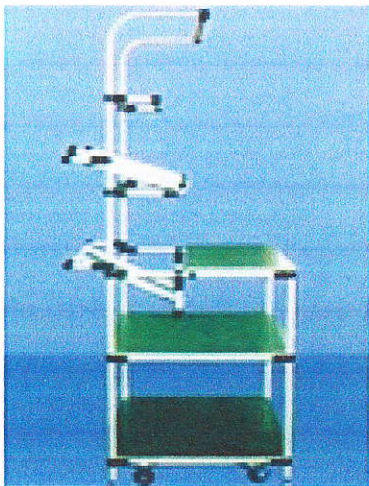
**CONECTOR HOLDER**

**PT PEMI**



**FORK**

**PT PEMI**



**WORKING TABLE  
(PIPE&JOINT SYSTEM)**

**PT AE AUTOMATION**

• *Company Profile CV. SINAR BINTANG TIMUR*  
Website : <http://www.sinarbintangtimur.com>



## Our Facility



### Vertical Machining Center

YCM MV106A BT 40

Table 1,120mm X 600mm

Spindle Speed 10,000 rpm

X-axis 1,020mm

Y-axis 600mm

Z-axis 600mm



### Vertical Machining Center

YMC MV1050 BT 40

Table 1,120mm X 600mm

Spindle Speed 8,000 rpm

X-axis 1,000mm

Y-axis 500mm

Z-axis 600mm

## Our Facility

EB606N



### JS EDM

#### EB606N ZNC Model

Working Table 700mm X 400mm

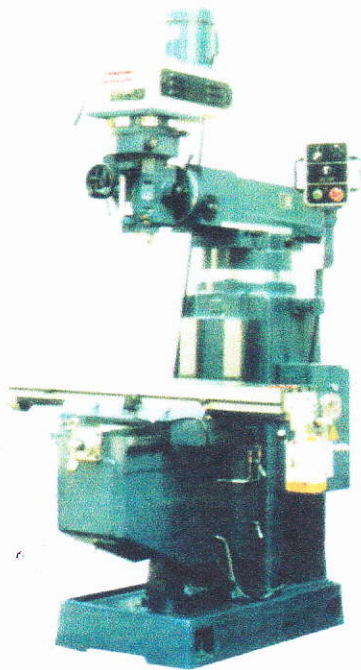
Max. distance between electrode holder plate to table top 640 mm

Max. Electrode weight 100 kg ( 220 lbs )

Loading capacity of work table 1500 kg

Longitudinal travel ( X Axis ) 400 mm

Cross travel ( Y Axis ) 300 mm



### MILLING MACHINE

#### STANDARD SM5

Table Size 1270mm X 254mm

Travel 780 X 410 X 450



## Our Facility

---



LATHE MACHINE  
KIANSI C6127A  
MAX SWING OVER BED 270MM  
MAX LENGTH WORK 800MM



SURFACE GRINDING  
NICCO  
WORKING TABLE 150 X 450

## Our Facility for Fabrication



Inverter Welding



Welding PVC



MAKITA

Cut Off Grinding



MILLER

Plate Cutting



MAKITA

Jig Saw



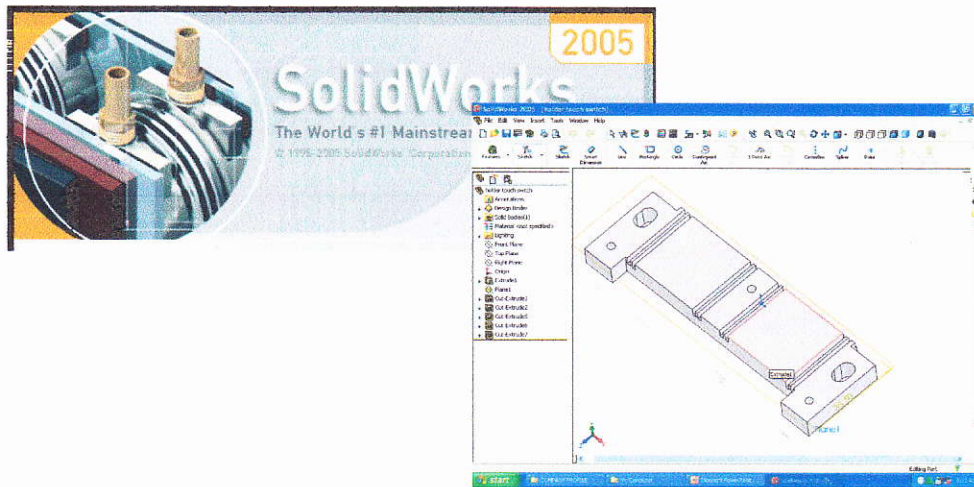
WEST LAKE

Bench Drilling

Company Profile CV. SINAR BINTANG TIMUR  
Website : <http://www.sinarbintangtimur.com>

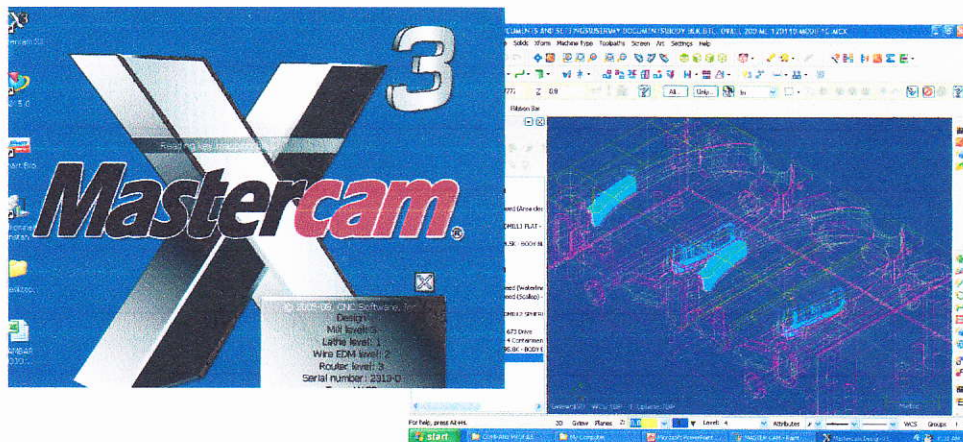


## Our Facility



SOLID WORK

FOR MODELING AND DESIGN

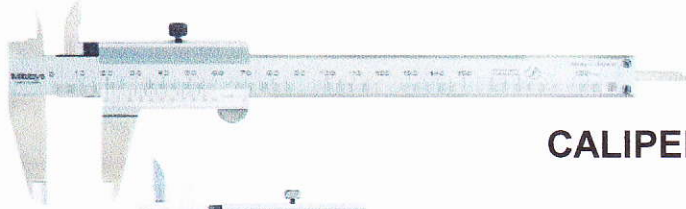


MASTER CAM

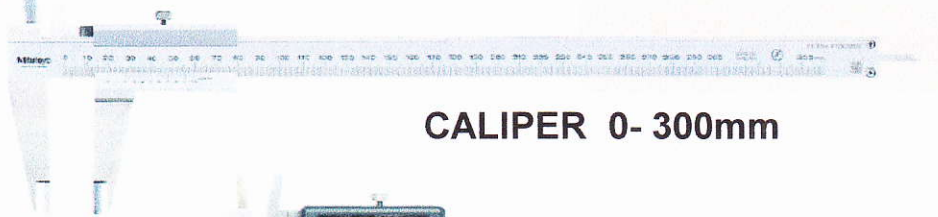
FOR NC PROGRAM

Company Profile CV. SINAR BINTANG TIMUR  
Website : <http://www.sinarbintangtimur.com>

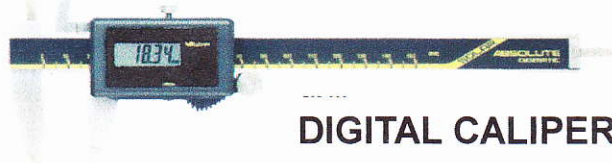
## Our Quality Equipment



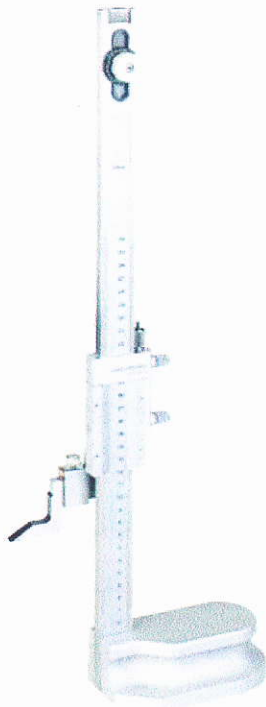
**CALIPER 0-150mm**



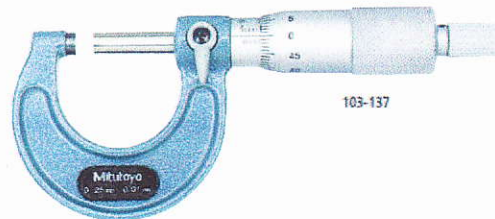
**CALIPER 0- 300mm**



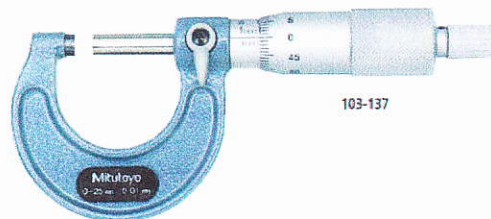
**DIGITAL CALIPER 0-150mm**



**HIGHT GAUGE 0-300mm**



**MICRO METER 0-25mm**



**MICRO METER 25-50 mm**



**ELECTRONIC EDGE SENSOR PM20**

Company Profile CV. SINAR BINTANG TIMUR  
Website : <http://www.sinarbintangtimur.com>